



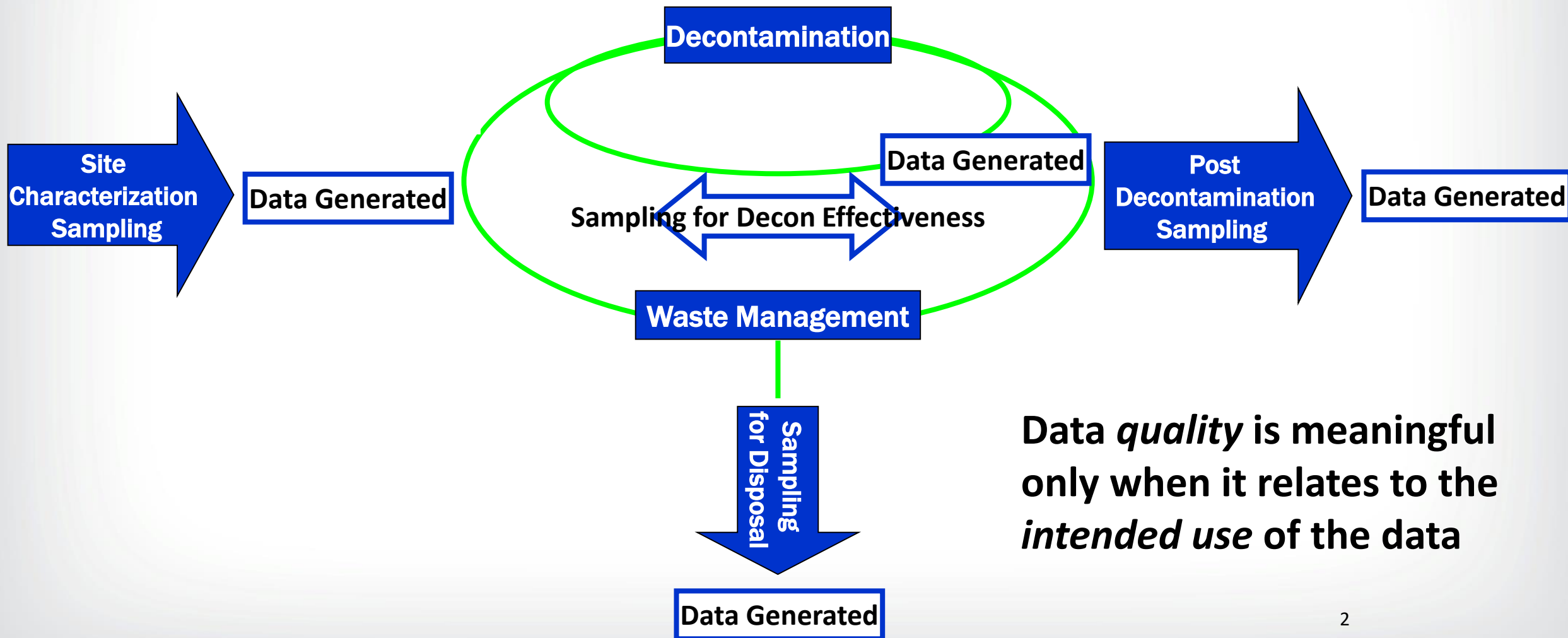
# Streamlining Documentation of Sampling and Analysis Plans for Biological Contamination Events



**Virtual Biological Sampling Design and Implementation Workshop  
September 15, 2020**



# Site Remediation Process

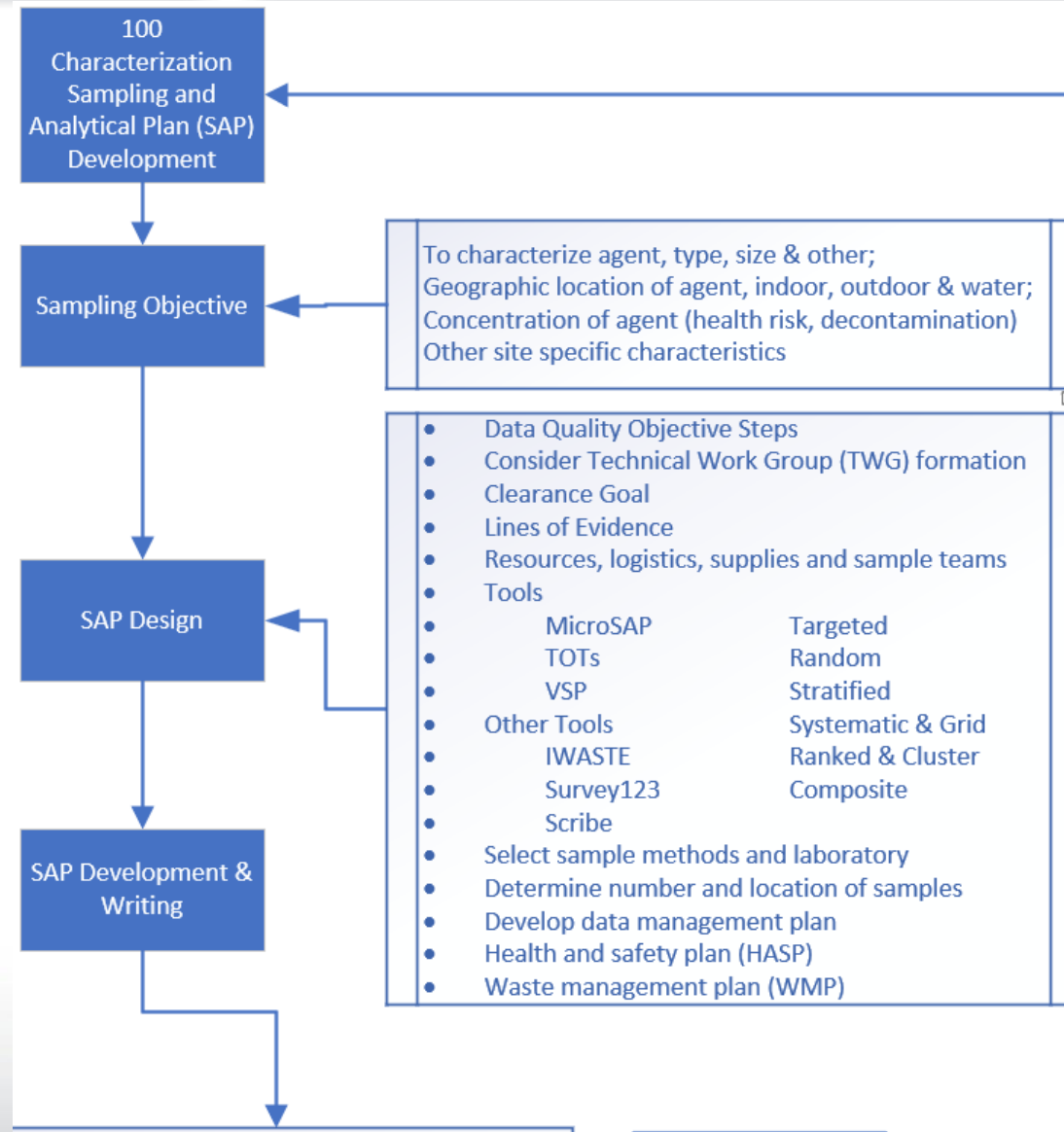




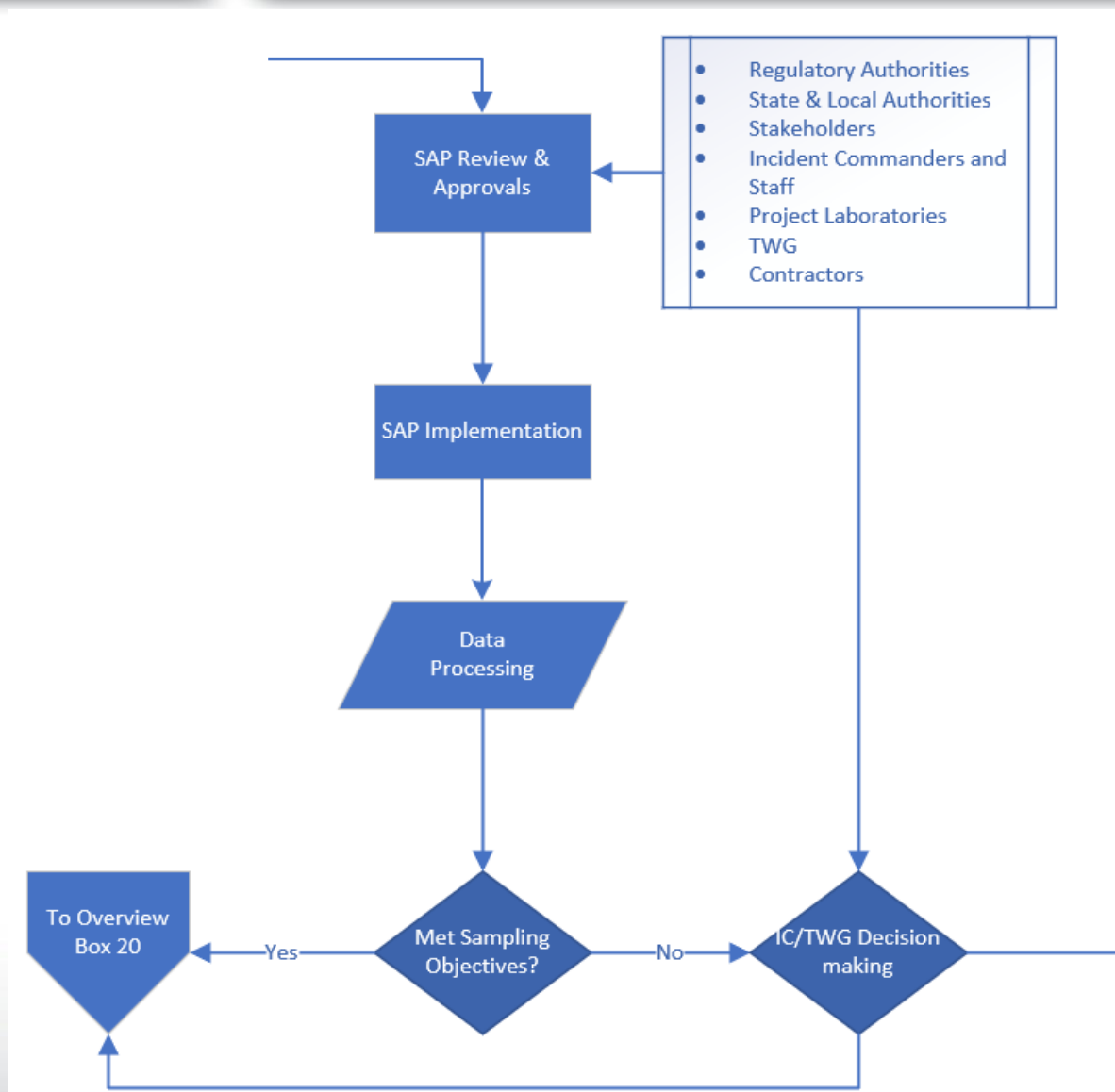
## Sampling and Analysis Plans

- Used to document the criteria for sampling and analysis activities and associated quality of the results (data quality objectives [DQOs])
- Helps ensure environmental data collected are of known and documented quality for the intended use
- SAP development is an iterative process and the SAP might require modification throughout a data collection event
- During collection and assessment of the results, it is important to ensure that the protocols outlined in the SAP were followed according to the established criteria

# SAP Development



# SAP Implementation





# Sampling and Analysis Plan Resources

## Considerations for Developing Sampling and Analysis Plans

Summarizes elements that should be considered when planning, developing and implementing a SAP including lines of evidence, field sampling, laboratory analyses and reporting, and data quality assessment and interpretation.

[Sampling, Laboratory and Data Considerations for Microbial Data Collected in the Field](#)



## Sampling and Analysis Plan Outline

Interim Draft Outline: Sampling and Analysis Plan for Environmental Samples Potentially Containing Pathogens to assist in generation of a SAP in an instance that one needs to be created offline.

[Sampling and Analysis Plan Outline for Environmental Samples Potentially Containing Pathogens](#)



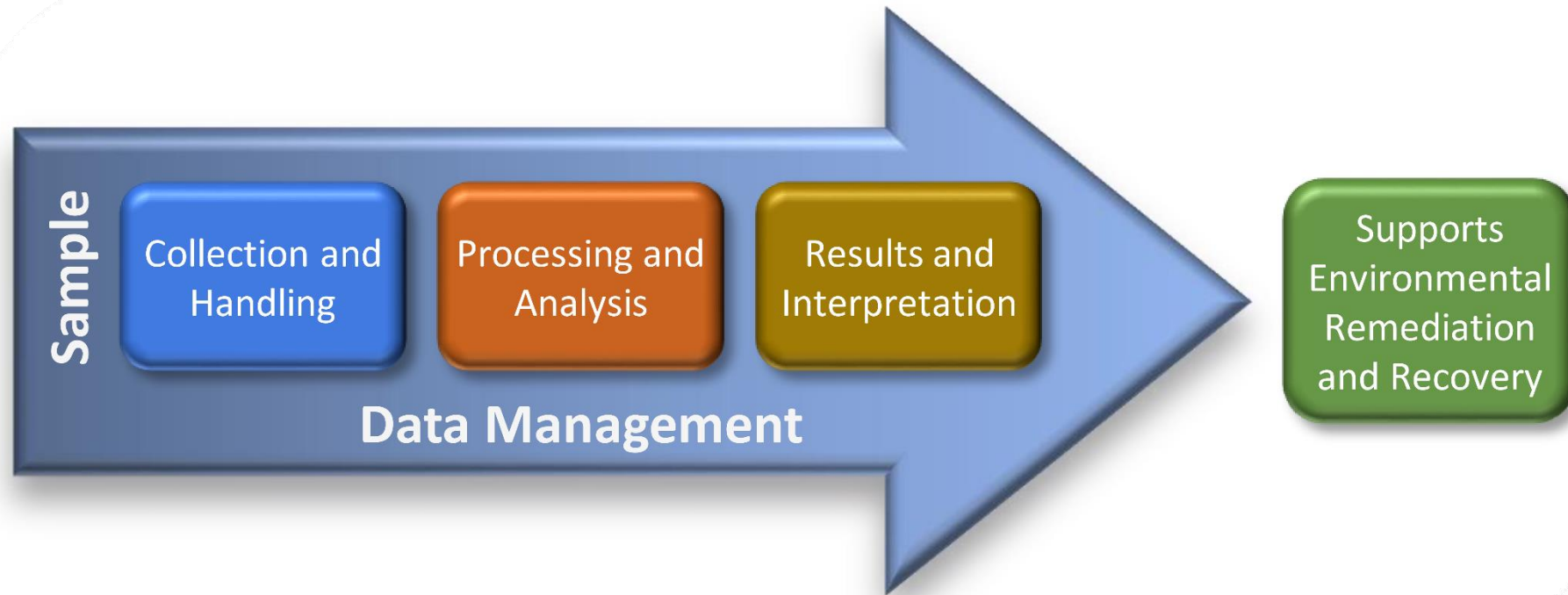
<https://www.epa.gov/esam/sampling-and-analysis-plan-resources-pathogens>





# Sampling and Analysis Plan Resources

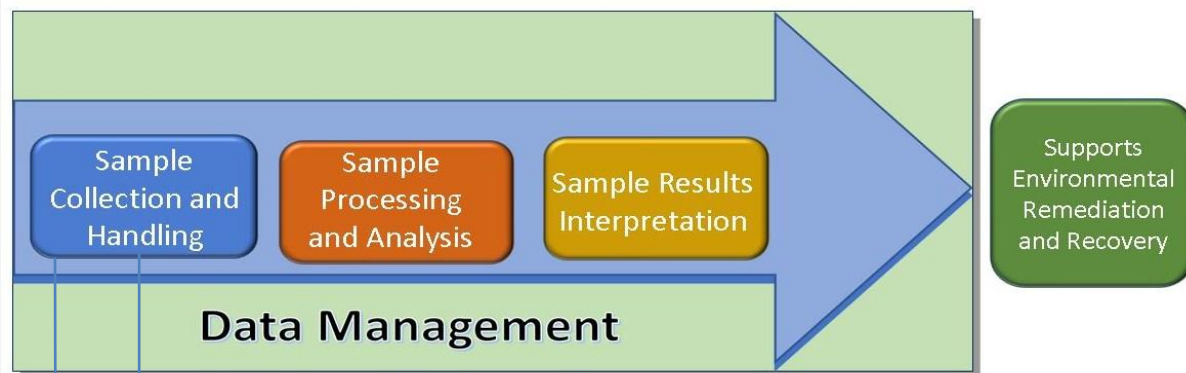
The Environmental Sampling and Analysis Method (ESAM) Program supports decision makers by coordinating sampling and analysis needs to a chemical, biological, radiochemical, or biotoxin contamination incident.



<https://www.epa.gov/esam>



# ESAM Sample Collection Protocols, Procedures, and Information



## Sample Collection Protocols & Procedures

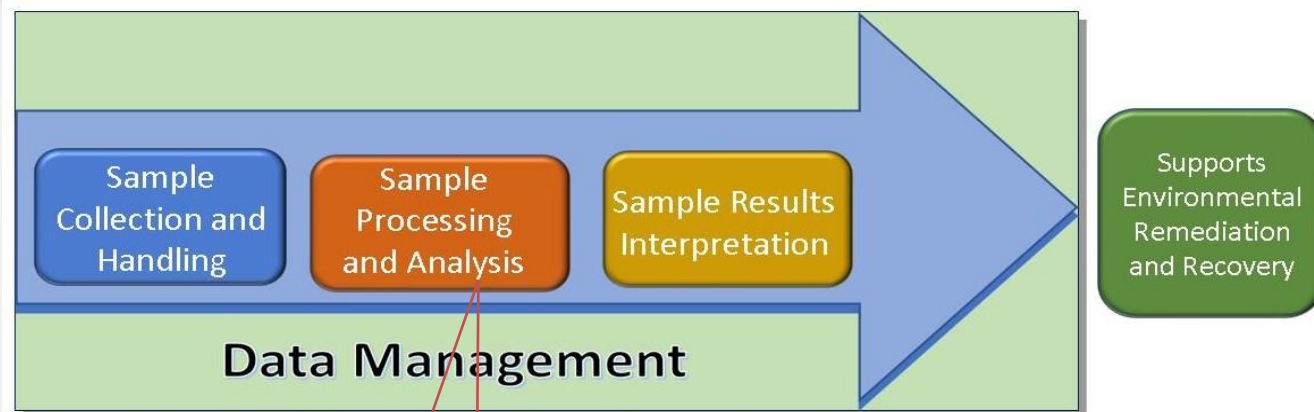
- Readily available protocols and procedures for use in the field by sample collectors

## Sample Collection Information Document (SCID)

- Online resource to facilitate field sample collection and laboratory requirements for large numbers of samples



# ESAM Sample Processing and Analysis



## Sample Processing and Analytical Protocols & Methods

- Readily available protocols and methods for use in the laboratories

## Selected Analytical Methods (SAM)

- Online resource identifying best available analytical method to be used by multiple laboratories during a large homeland security incident





## Future SAP Resources: MicroSAP Tool Quick Facts



- On-line or Microsoft app tool to document and store SAPs\*
  - Intended to be user-friendly and step users through development of a SAP
  - Features drop down menus, custom fields, and flags for action items or delegation
  - Stores previous files to be used as templates and for easy access to the SAP
- Designed for remediation phase of biological incidents, exercises, and research
- Target users are environmental unit leaders/On-scene coordinators

\*Tool under revision and will be investigated in several platforms to fix current glitches

## What the MicroSAP Tool Does NOT do

- Does NOT replace use of a statistician or other sample planning tool to determine sample numbers or locations
  - The tool is intended to help you document this information
- Does NOT replace the data management plan, waste management plan, or health and safety plans developed for the incident





## Future SAP Resources: Sampling and Analysis Plan Fillable Template

- [PDF template](#) that walks users through filling out a SAP for microbiological contamination incidents
- Incorporates DQO process into the SAP
- Mimics intended output of the MicroSAP tool

A screenshot of a fillable template for a Sampling and Analysis Plan (SAP) from the U.S. EPA. The form features the EPA seal at the top, followed by the title "U.S. EPA Sampling and Analysis Plan". Below the title is a large rectangular box for a header or title. Further down, there are fields for "Technical Lead:" and "Prepared By:", each followed by a rectangular box. At the bottom, there is a "Date:" label followed by a small rectangular box. The entire form is enclosed in a white border with a dark blue footer bar at the bottom.