

A U.S. Human Wellbeing Index (HWBI) for Evaluating the Influence of Economic, Social and Ecological Service Flows



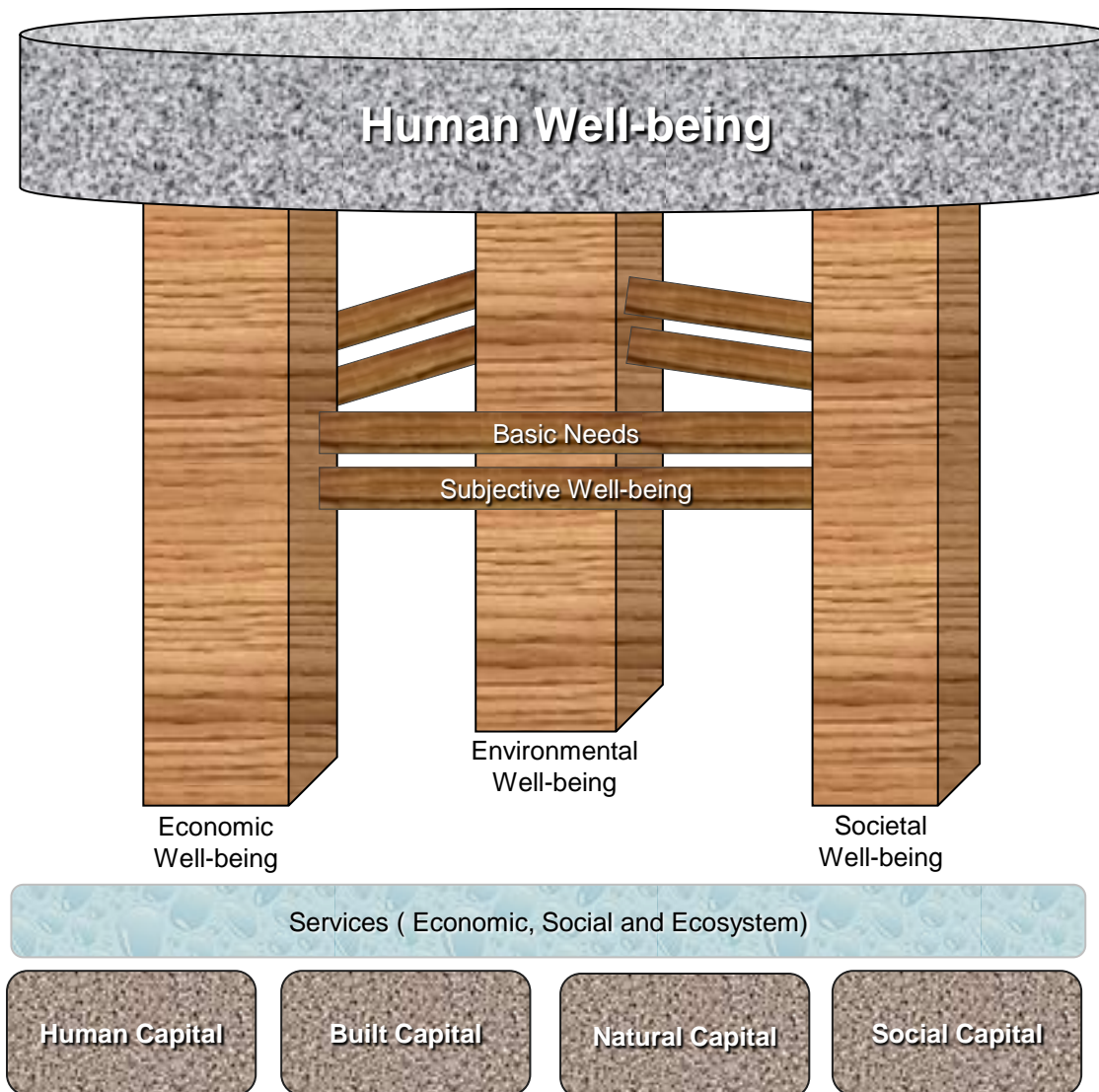
Lisa M. Smith, J. Kevin Summers
and Linda C. Harwell
Office of Research and Development
NHEERL/Gulf Ecology Division

Sustainable and Healthy Communities Research Program

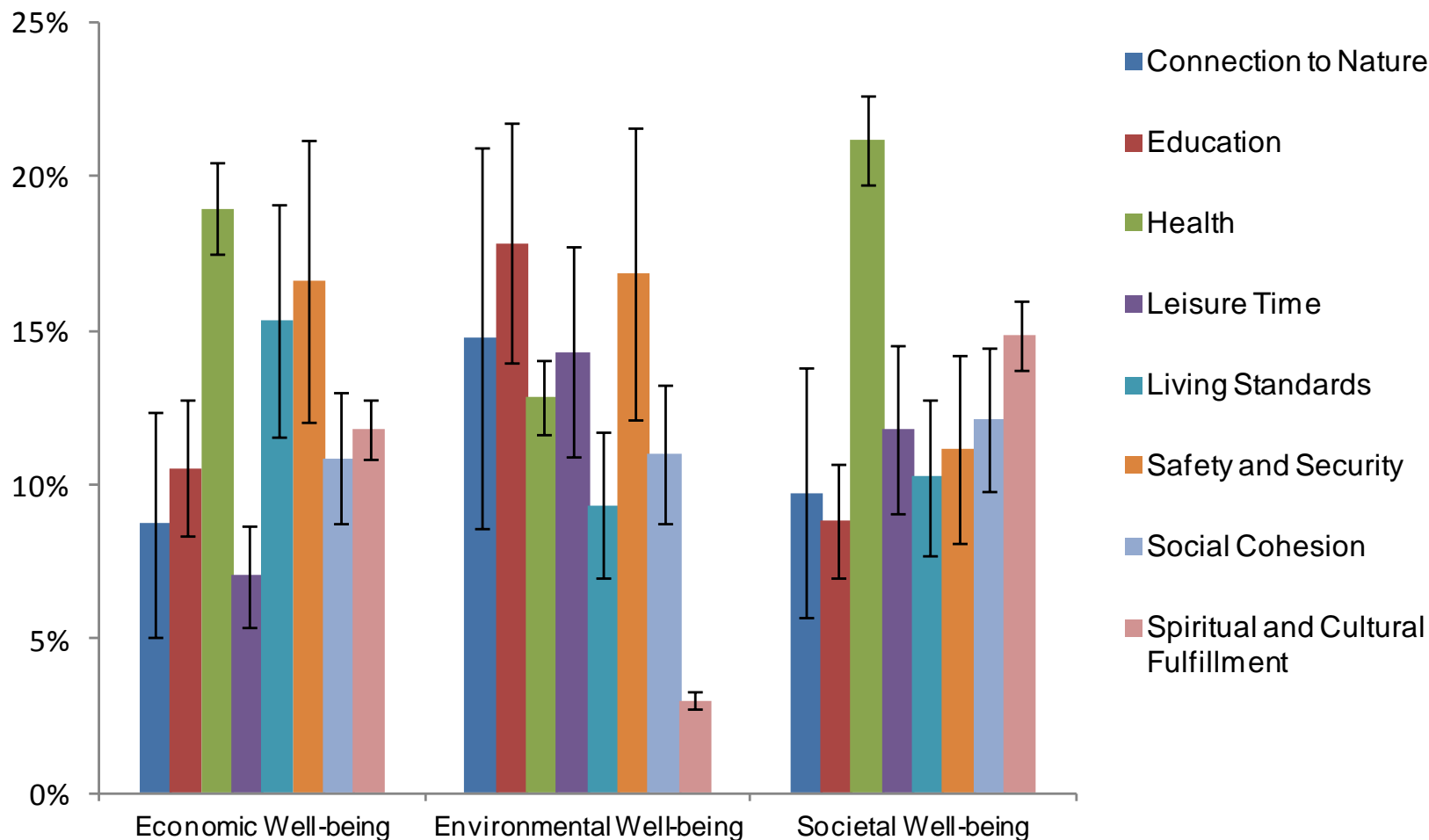
Research to provide communities, and other levels of governance, with data, methods, indicators, models, and tools that they can use to develop efficient, effective, and equitable approaches to increase community sustainability and resiliency by maximizing co-benefits and minimizing unintended consequences.



Indicators and Indices Project Task: Create a Human Well-being Index (HWBI) for the U.S. using indicators that are responsive to changes in the provisioning of ecosystem services, economic drivers and social conditions

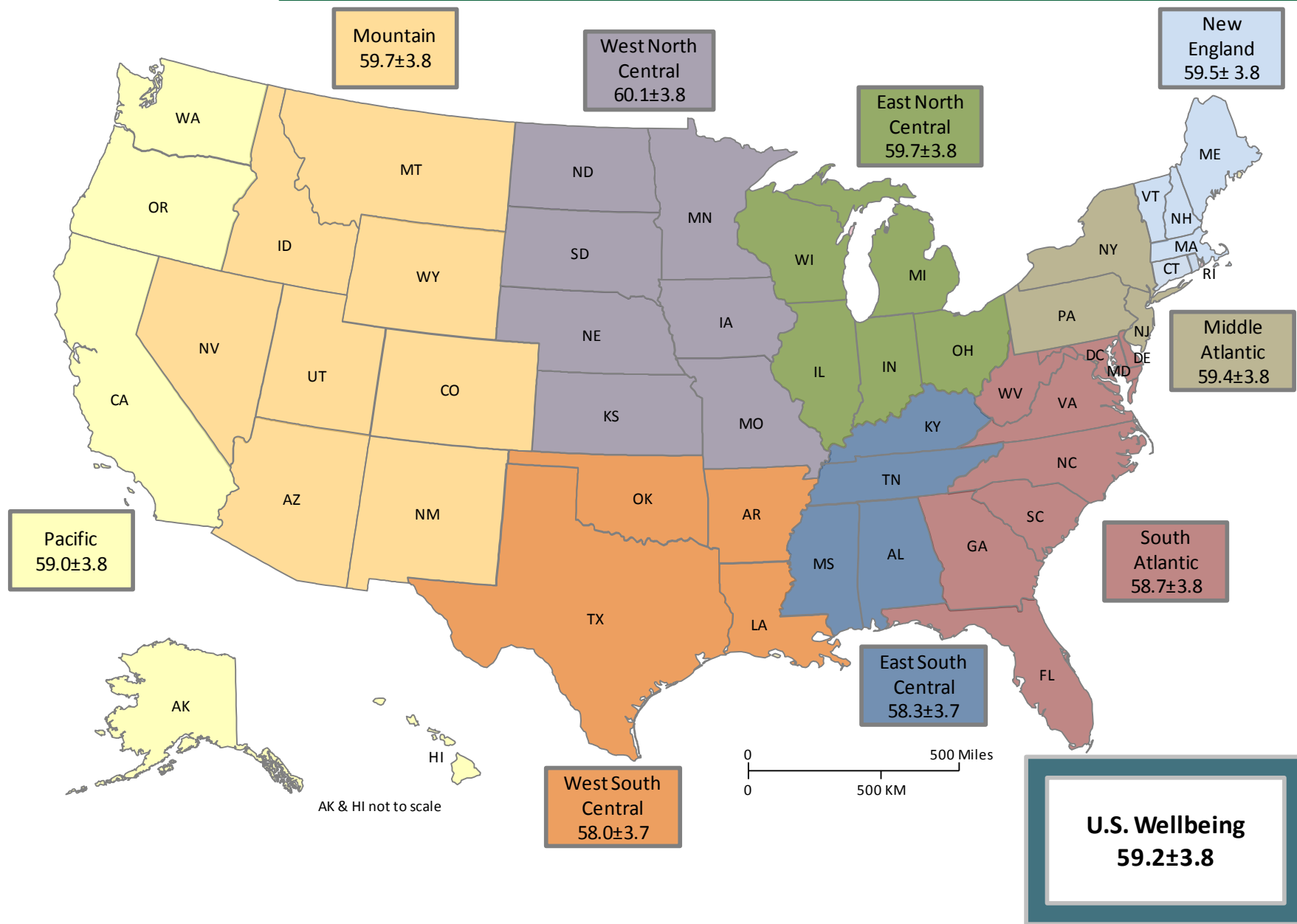


Contribution of domains within each element of well-being

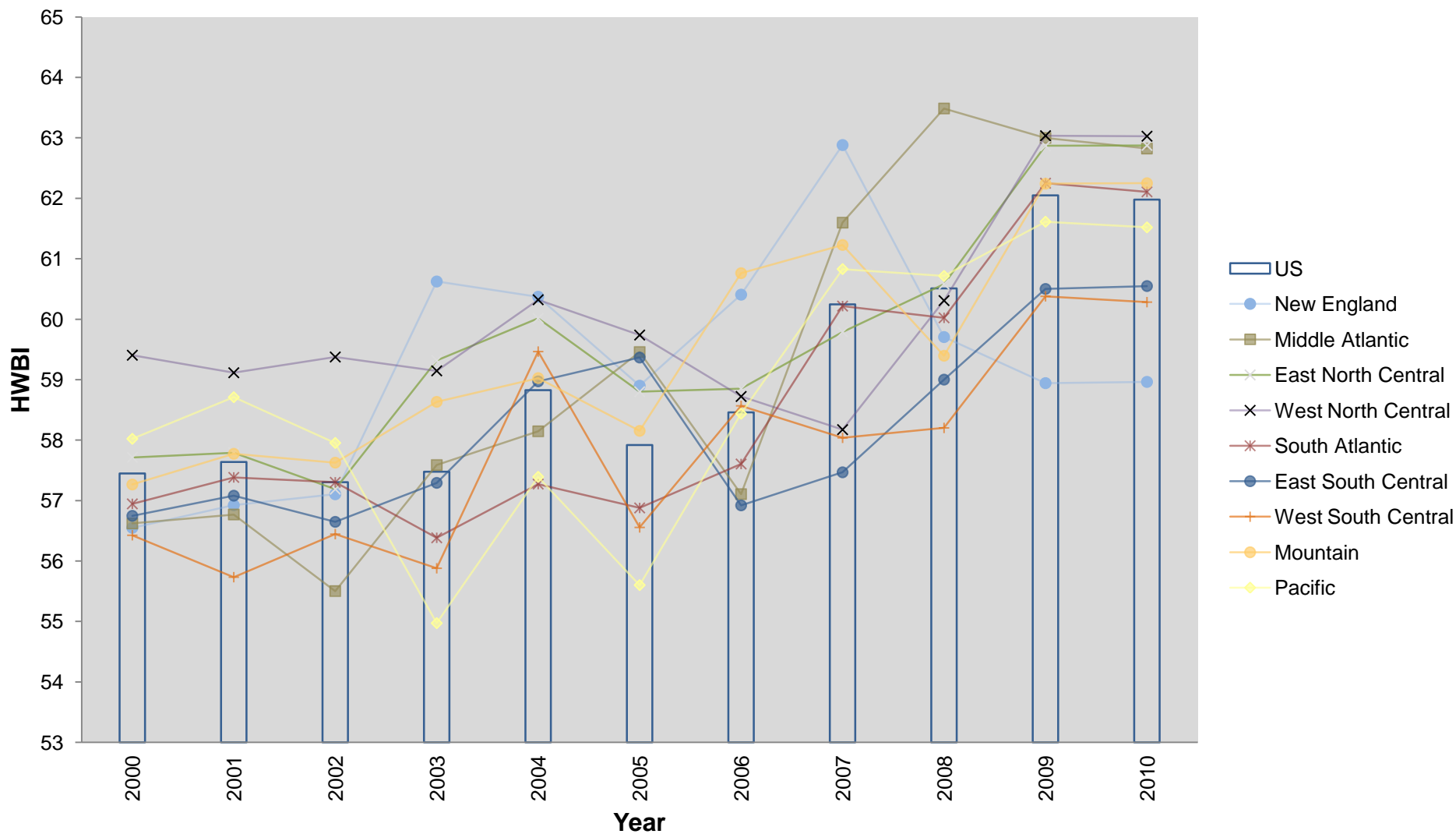


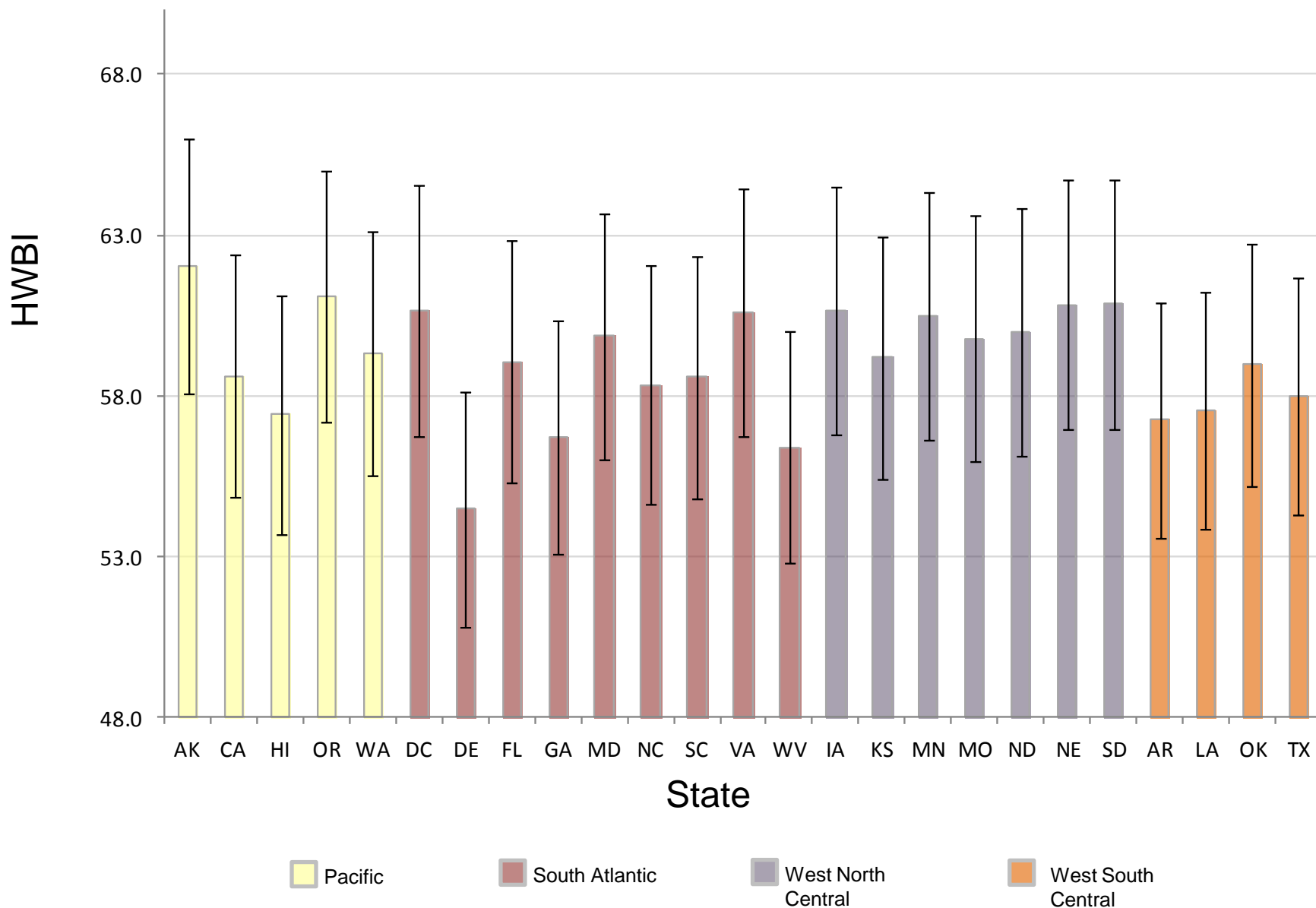


SUSTAINABLE and HEALTHY COMMUNITIES RESEARCH PROGRAM

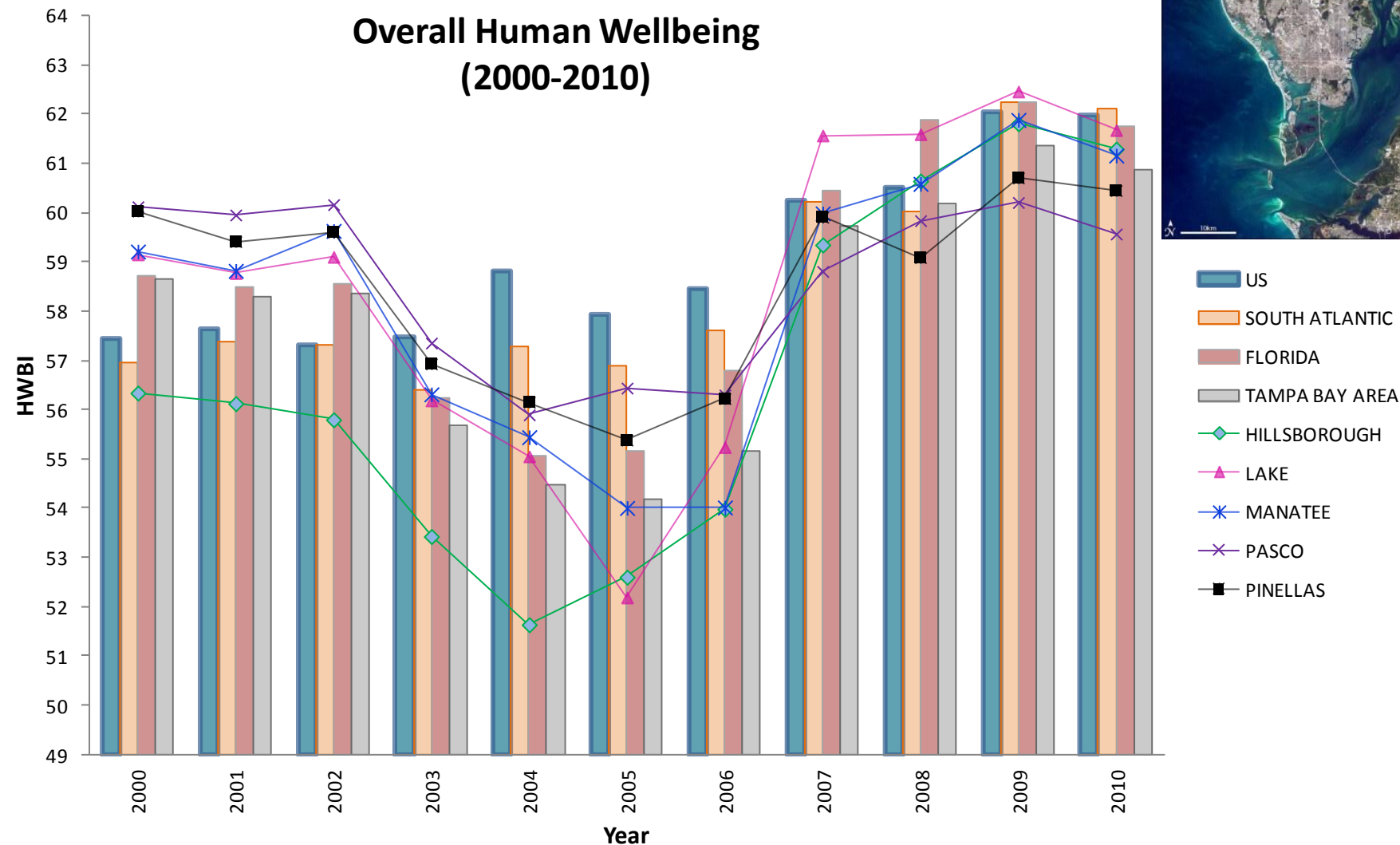


Overall Human Wellbeing (2000-2010)



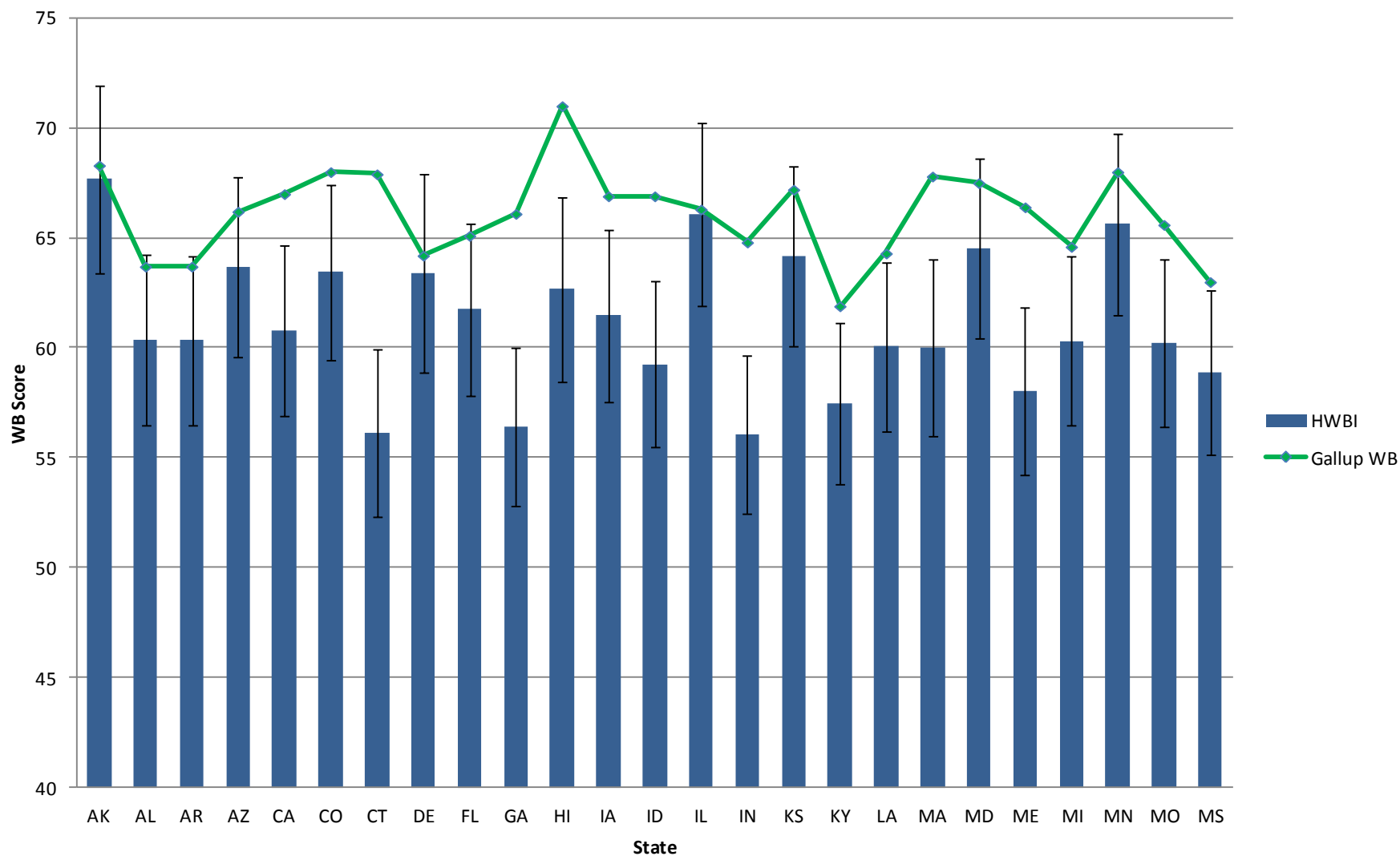


Overall Human Wellbeing (2000-2010)



- US
- SOUTH ATLANTIC
- FLORIDA
- TAMPA BAY AREA
- HILLSBOROUGH
- LAKE
- MANATEE
- PASCO
- PINELLAS

Gallup-HWBI Comparison 2010



Thanks!

