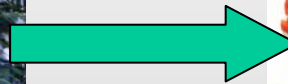
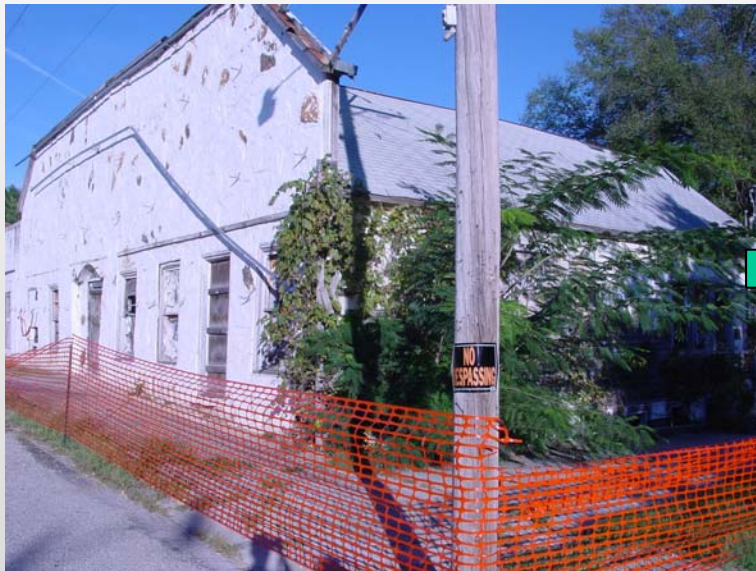


SMARTe Framework

Present Structure and Ideas for the Future



***Ann Vega – USEPA/Office of Research and Development
DE.SMARTe/SMARTe Workshop
Leipzig, Germany – June 25, 2009***



Outline

- Background
- SMARTe Overview
- SMARTe Demonstration
- SMARTe Future
- Contact Information



What is SMARTe?





SMARTe Overview

Sustainable Management
Approaches and Revitalization
Tools – electronic

Overcome Revitalization Obstacles

Content: Information, Resources, Case Studies, Links; Checklists; Identify questions to ask

Analysis Tools: Technical and Non-Technical

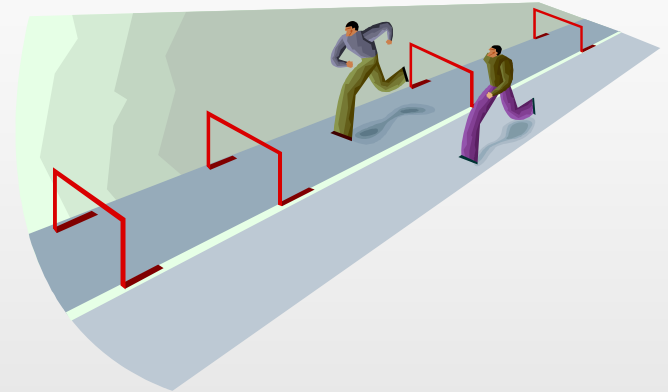
Search Engine: Find Specific Info

My Project: Evaluate Reuse Options

SMARTe 2009 is available at: smarte.org

Obstacles to Revitalization

Challenge: To remove **obstacles** to revitalization



Short list:

- Identifying market and non-market costs and benefits of revitalization options
- **Identifying private and public financing options**
- Evaluating and communicating environmental risks
- Identifying and evaluating characterization, remediation, and long-term monitoring technologies
- Identifying state-specific information



SMARTe Contributions by:

NEEK Specializing
in Brownfields
Revitalization
Engineering, Inc.

ATERWYNNE LLP
ATTORNEYS AT LAW

**OPPER
&
VARCO
LLP**

**THE ENVIRONMENTAL
LAW GROUP**

 **UNIVERSITY OF
LOUISVILLE**



ICF
INTERNATIONAL™

Hazardous Substance



NKU NORTHERN
KENTUCKY
UNIVERSITY



**Università
Ca' Foscari
Venezia
Online**



Who can Benefit from SMARTe?

- **Community Members**
- **Brownfield Grantees**
- **Regulators and Redevelopment Agencies**
- **Federal, State, and Local Government Officials**
- **Financial and Legal Stakeholders**
- **Developers**
- **Property Owners**
- **Private Consultants**



SMARTe Development and User/Community Input

- Open Literature, Internet, Databases, Experts, Conferences
- Joint Workshops (CD information at smarte.org)
- Model Projects – Revitalization Successes
- User Feedback
- Beta Test Sites
 - Stella, MO
 - Rittman, OH





SMARTe Has...

- Educated Stella community members regarding where to start and what questions to ask
- Identified social, environmental, and economic issues to be aware of/keep in mind
- Provided ideas for financial resources for site characterization and revitalization
 - EPA's Brownfield Office
 - USDA – applying for grants
 - HUD – found contact to obtain a brownfield economic development kit; applying for grants
 - DOT – found potential funding for road improvements
 - HUD/MO – elibrary – additional financial resources
 - Grants.gov – potential funding for community development
- Provided information related to preserving cultural heritage





User Feedback

- “It [SMARTe] has also been an inspiration to keep trying.”
–Carolyn Dyer, resident of Stella
- “I’m discovering more and more the further I go. My how this site has grown!!!! Keep up the good work. I do have some great leads for future land use and financing thanks only to SMARTe. Thank you.”
- Bill Alsop, Mayor of the Village of Stella, MO
- “I entered smarte.org and found economic analysis then went through the steps recommended under market analysis. This is very good information and is giving me a clear direction to cover all the basis [sic] in preparing our package for financing.”
- Mona Hart, community advocate for Stella



SMARTe 2008 “Table of Contents”

- **Getting Started**
- **Site Description**
- **Future Land Use**
- **Community Involvement**
- **Environmental Management**
- **Liability**
- **Financial Analysis**
- **Sources of Money**
- **Project Schedule**
- **Other (*additional resources*)**

Overview
Vision
Previous Plans
Revitalization Motivation
Regional and Local Needs
Marketing the Project Benefits
Sustainable Practices
Keys to Success
Innovative Project Features
Construction/Demolition
Resources and Tools



SMARTe 2008 “Table of Contents”

- **Getting Started**
- **Site Description**
- **Future Land Use**
- **Community Involvement**
- **Environmental Management**
- **Liability**
- **Financial Analysis**
- **Sources of Money**
- **Project Schedule**
- **Other (*additional resources*)**

Overview
Public Financing
Private Financing
Foundation Funding
Resources and Tools



SMARTe Tools

SMARTe - SMARTe Tool Collection - Windows Internet Explorer

http://beta.smarte.org/smarte/tools/index.xml

SMARTe - SMARTe Tool Collection

Getting Started
Site Description
Future Land Use
Community Involvement
Environmental Management
Liability
Financial Analysis
Sources of Money
Project Schedule
Other

Home Schematic Tools Case Studies Links Help Tutorial PDF this page

SMARTe Tool Collection

Feedback

Project Vision

Feedback

Tools	Checklists
<ul style="list-style-type: none">Community Involvement TechniquesPotential StakeholdersThe Vision to Action is currently available only through registering and logging in a Project.	<ul style="list-style-type: none">Land Reuse OptionsSelect a ConsultantSelect a LawyerPurchasing a Brownfield PropertyFinding an Insurance BrokerDo I need a permit?Selecting a DeveloperUnderstanding Units of MeasurementWriting a Request for Proposals for Environmental Site Assessment or CleanupWhat are Quality Assurance Project Plans?

Environmental

Feedback

- Human Health Risk Calculator
- Site Characterization
- Monitoring Data Analysis
- Fate and Transport

Economic

Feedback

- A Net Benefit Calculator is available through registering and logging in a Project.

MY PROJECT LOGIN

Project ID
Password
New Project? Sign up [here](#)
Sign In

SPONSORS

UNITED STATES ENVIRONMENTAL PROTECTION AGENCY
Federal Ministry of Education and Research
INTERSTATE TECHNOLOGY REGULATOR COUNCIL

SMARTe 2009



Park



Speedway



Housing





My Project – Compare Reuse Options

For each reuse option, enter:

- Development Costs
- Soft Costs
- Environmental Costs
- Operating Costs
- Revenues
- Tax Credits
- Financing
- Community Value



Then compare options!



To Access SMARTe 2009

smarte.org

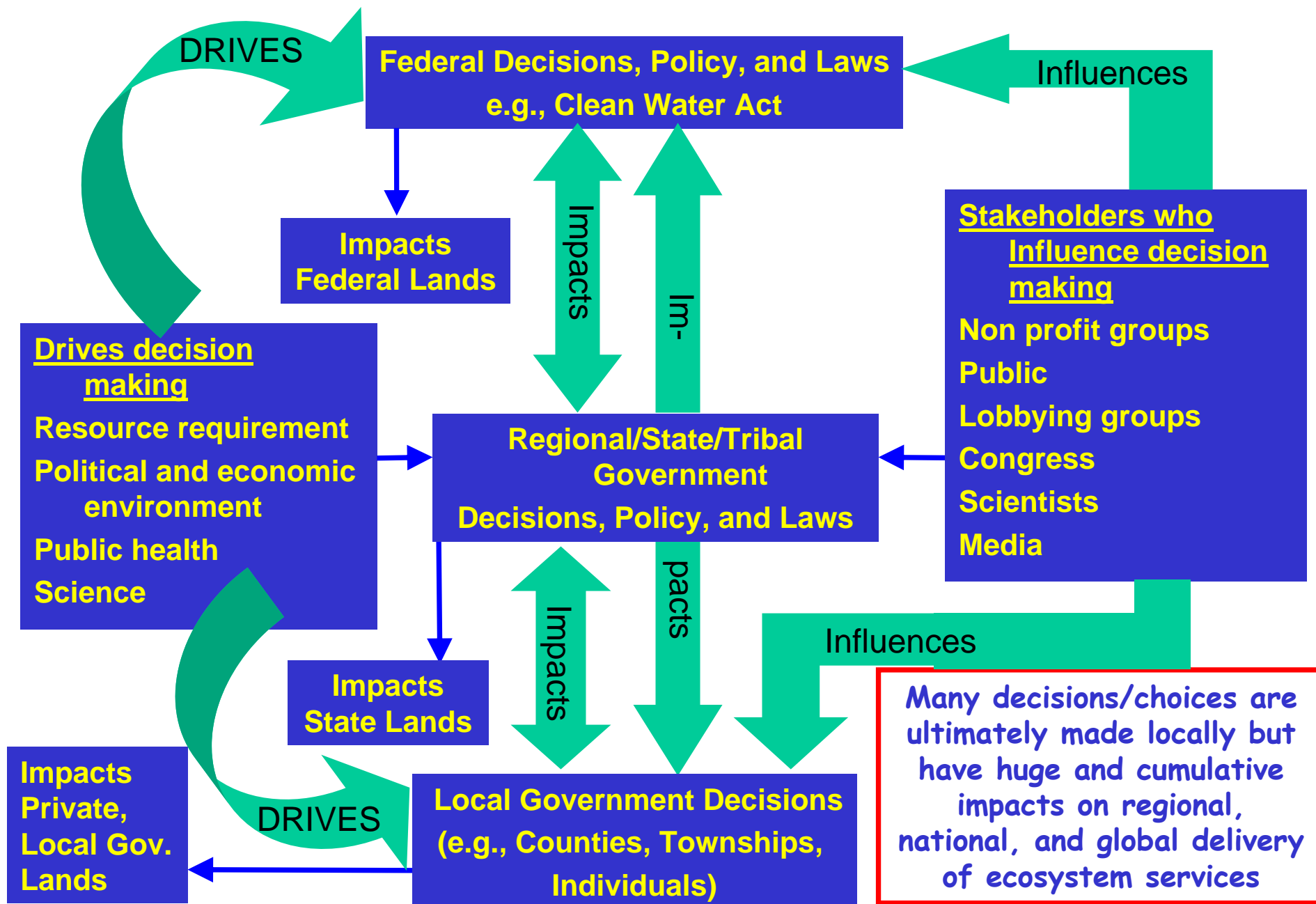
Requires Internet Explorer 6.0 or Mozilla/Firefox 1.1 & higher



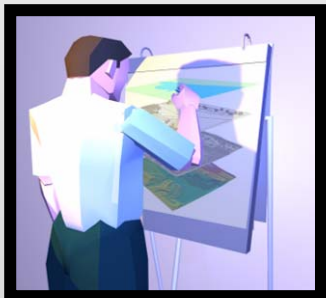
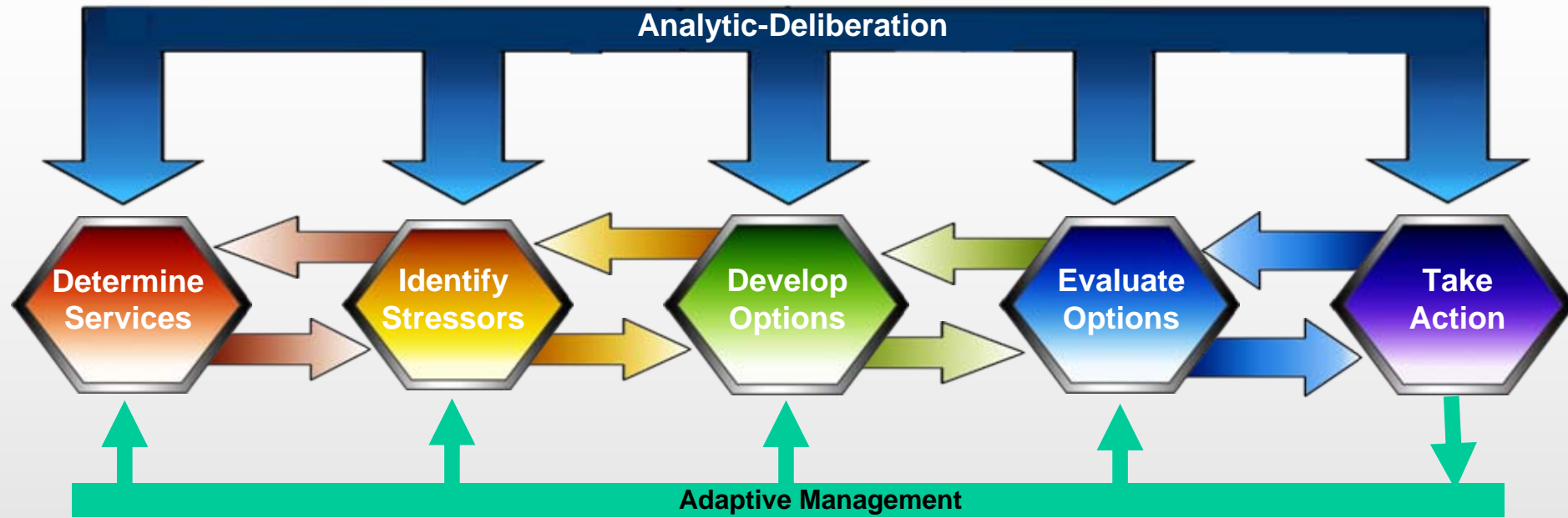
Future SMARTe Focus Areas

- **Planning Land Use Sustainably (PLUS)**
 - **Regional Infrastructure and Transboundary Management**
 - **Financial Management**
 - **Brownscape Design and Pre-Development**
 - **Methods of Governance/Communication and Data Management/Decision Support**
 - **Additional Analysis Tools**

Decision Making Occurs at Multiple Levels



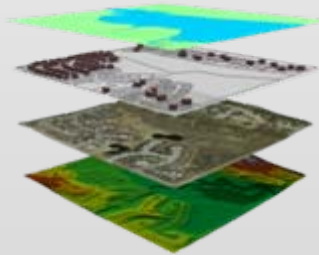
A Framework for Making Land and Resource Use Decisions to Maintain Healthy Ecosystem Services (Provisioning, Regulating, Cultural, Supporting)



Define region, map current uses, capacity of services, and pre-requisites for maintaining healthy ecosystem services



Identify Stressors to ecosystem services and human health



Develop sustainable land and resource use options to protect ecosystem services, meet human needs/values, and manage risk



Stakeholders negotiate inputs, evaluate options, determine path forward, begin to implement



Carry out plan with adaptive management



Ann Vega, Revitalization Research Program Manager

U.S. EPA – Office of Research and Development

513-569-7635

vega.ann@epa.gov





Web Sites

Office of Brownfields and Land Revitalization (OBLR)

<http://www.epa.gov/brownfields>

US-German Bilateral Working Group

<http://www.bilateral-wg.org/>

Interstate Technology and Regulatory Council

www.itrcweb.org

SMARTe

smarte.org