

## Provisional Peer-Reviewed Toxicity Values for

*n,n*-Dimethylcyclohexylamine  
(CASRN 98-94-2)

Superfund Health Risk Technical Support Center  
National Center for Environmental Assessment  
Office of Research and Development  
U.S. Environmental Protection Agency  
Cincinnati, OH 45268

## **AUTHORS, CONTRIBUTORS, AND REVIEWERS**

### **CHEMICAL MANAGER:**

Harlal Choudhury, National Center for Environmental Assessment, Cincinnati, OH

### **DRAFT DOCUMENT PREPARED BY:**

National Center for Environmental Assessment, Cincinnati, OH

This document was externally peer-reviewed under contract to:

Eastern Research Group, Inc.  
110 Hartwell Avenue  
Lexington, MA 02421-3136

Questions regarding the contents of this document may be directed to the U.S. EPA Office of Research and Development's National Center for Environmental Assessment, Superfund Health Risk Technical Support Center (513-569-7300).

## TABLE OF CONTENTS

COMMONLY USED ABBREVIATIONS .....	ii
BACKGROUND .....	1
DISCLAIMERS .....	1
QUESTIONS REGARDING PPRTVS .....	1
INTRODUCTION .....	2
REVIEW OF POTENTIALLY RELEVANT DATA (CANCER AND NONCANCER).....	3
DERIVATION OF PROVISIONAL VALUES .....	3
CANCER WEIGHT-OF-EVIDENCE (WOE) DESCRIPTOR.....	4
MODE-OF-ACTION (MOA) DISCUSSION .....	4

## COMMONLY USED ABBREVIATIONS

BMC	benchmark concentration
BMD	benchmark dose
BMCL	benchmark concentration lower bound 95% confidence interval
BMDL	benchmark dose lower bound 95% confidence interval
HEC	human equivalent concentration
HED	human equivalent dose
IUR	inhalation unit risk
LOAEL	lowest-observed-adverse-effect level
LOAEL <sub>ADJ</sub>	LOAEL adjusted to continuous exposure duration
LOAEL <sub>HEC</sub>	LOAEL adjusted for dosimetric differences across species to a human
NOAEL	no-observed-adverse-effect level
NOAEL <sub>ADJ</sub>	NOAEL adjusted to continuous exposure duration
NOAEL <sub>HEC</sub>	NOAEL adjusted for dosimetric differences across species to a human
NOEL	no-observed-effect level
OSF	oral slope factor
p-IUR	provisional inhalation unit risk
p-OSF	provisional oral slope factor
p-RfC	provisional reference concentration (inhalation)
p-RfD	provisional reference dose (oral)
POD	point of departure
RfC	reference concentration (inhalation)
RfD	reference dose (oral)
UF	uncertainty factor
UF <sub>A</sub>	animal-to-human uncertainty factor
UF <sub>C</sub>	composite uncertainty factor
UF <sub>D</sub>	incomplete-to-complete database uncertainty factor
UF <sub>H</sub>	interhuman uncertainty factor
UF <sub>L</sub>	LOAEL-to-NOAEL uncertainty factor
UF <sub>S</sub>	subchronic-to-chronic uncertainty factor
WOE	weight of evidence

**PROVISIONAL PEER-REVIEWED TOXICITY VALUES FOR  
*n,n*-DIMETHYLCYCLOHEXYLAMINE (CASRN 98-94-2)**

**BACKGROUND**

A Provisional Peer-Reviewed Toxicity Value (PPRTV) is defined as a toxicity value derived for use in the Superfund Program. PPRTVs are derived after a review of the relevant scientific literature using established Agency guidance on human health toxicity value derivations. All PPRTV assessments receive internal review by a standing panel of National Center for Environment Assessment (NCEA) scientists and an independent external peer review by three scientific experts.

The purpose of this document is to provide support for the hazard and dose-response assessment pertaining to chronic and subchronic exposures to substances of concern, to present the major conclusions reached in the hazard identification and derivation of the PPRTVs, and to characterize the overall confidence in these conclusions and toxicity values. It is not intended to be a comprehensive treatise on the chemical or toxicological nature of this substance.

The PPRTV review process provides needed toxicity values in a quick turnaround timeframe while maintaining scientific quality. PPRTV assessments are updated approximately on a 5-year cycle for new data or methodologies that might impact the toxicity values or characterization of potential for adverse human health effects and are revised as appropriate. It is important to utilize the PPRTV database (<http://hhpprtv.ornl.gov>) to obtain the current information available. When a final Integrated Risk Information System (IRIS) assessment is made publicly available on the Internet ([www.epa.gov/iris](http://www.epa.gov/iris)), the respective PPRTVs are removed from the database.

**DISCLAIMERS**

The PPRTV document provides toxicity values and information about the adverse effects of the chemical and the evidence on which the value is based, including the strengths and limitations of the data. All users are advised to review the information provided in this document to ensure that the PPRTV used is appropriate for the types of exposures and circumstances at the site in question and the risk management decision that would be supported by the risk assessment.

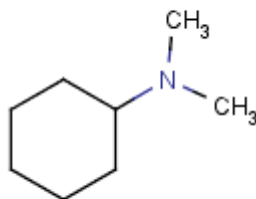
Other U.S. Environmental Protection Agency (EPA) programs or external parties who may choose to use PPRTVs are advised that Superfund resources will not generally be used to respond to challenges, if any, of PPRTVs used in a context outside of the Superfund program.

**QUESTIONS REGARDING PPRTVS**

Questions regarding the contents and appropriate use of this PPRTV assessment should be directed to the EPA Office of Research and Development's National Center for Environmental Assessment, Superfund Health Risk Technical Support Center (513-569-7300).

## INTRODUCTION

*n,n*-Dimethylcyclohexylamine, CASRN 98-94-2, is an intermediate and catalyst used in the textile and rubber industry. The empirical formula for *n,n*-dimethylcyclohexylamine is C<sub>8</sub>H<sub>17</sub>N (see Figure 1). A table of physicochemical properties is provided below (see Table 1).



**Figure 1. *n,n*-Dimethylcyclohexylamine Structure**

<b>Table 1. Physicochemical Properties Table (<i>n,n</i>-Dimethylcyclohexylamine CASRN 98-94-2)<sup>a</sup></b>	
Property (unit)	Value
Boiling point (°C)	162–165
Melting point (°C)	-60
Relative Density (water = 1)	0.85
Vapor pressure (kPa at 25°C)	0.4
pH (unitless)	Not available
Solubility in water (g/100 mL at 20°C)	20
Relative vapor density (air = 1)	4.4
Molecular weight (g/mol)	127.26

<sup>a</sup>Source: International Programme on Chemical Safety (IPCS) INCHEM; International Chemical Safety Card No. 1444. Available at <http://www.inchem.org>. Accessed on 11-01-10.

No reference dose (RfD), reference concentration (RfC), or cancer assessment for *n,n*-dimethylcyclohexylamine is included on the IRIS database (U.S. EPA, 2010) or on the Drinking Water Standards and Health Advisories List (U.S. EPA, 2009). No RfD or RfC values are reported in the Health Effects Assessment Summary Tables (U.S. EPA, 2003). The Chemical Assessments and Related Activities (CARA) list (U.S. EPA, 1994) does not include a Health and Environmental Effects Profile (HEEP) for *n,n*-dimethylcyclohexylamine. The toxicity of *n,n*-dimethylcyclohexylamine has not been reviewed by the Agency for Toxic Substances and Disease Registry (ATSDR, 2010) or the World Health Organization (WHO, 2010). The California Environmental Protection Agency (CalEPA, 2008, 2009) has not derived toxicity values for exposure to *n,n*-dimethylcyclohexylamine. No occupational exposure limits for *n,n*-dimethylcyclohexylamine have been derived by the American Conference of

Governmental Industrial Hygienists (ACGIH, 2010), listed by the National Institute of Occupational Safety and Health (NIOSH, 2005), or adopted by the Occupational Safety and Health Administration (OSHA, 2010).

The HEAST (U.S. EPA, 2003) does not report any cancer values for *n,n*-dimethylcyclohexylamine. The International Agency for Research on Cancer (IARC, 2010) has not reviewed the carcinogenic potential of *n,n*-dimethylcyclohexylamine. *n,n*-Dimethylcyclohexylamine is not included in the 11<sup>th</sup> Report on Carcinogens (NTP, 2005). CalEPA (2009) has not prepared a quantitative estimate of carcinogenic potential for *n,n*-dimethylcyclohexylamine.

Literature searches were conducted on sources published from 1900 through May 3, 2011 for studies relevant to the derivation of provisional toxicity values for *n,n*-dimethylcyclohexylamine, CAS No. 98-94-2. Searches were conducted using EPA's Health and Environmental Research Online (HERO) database of scientific literature. HERO searches the following databases: AGRICOLA; American Chemical Society; BioOne; Cochrane Library; DOE: Energy Information Administration, Information Bridge, and Energy Citations Database; EBSCO: Academic Search Complete; GeoRef Preview; GPO: Government Printing Office; Informaworld; IngentaConnect; J-STAGE: Japan Science & Technology; JSTOR: Mathematics & Statistics and Life Sciences; NSCEP/NEPIS (EPA publications available through the National Service Center for Environmental Publications [NSCEP] and National Environmental Publications Internet Site [NEPIS] database); PubMed: MEDLINE and CANCERLIT databases; SAGE; Science Direct; Scirus; Scitopia; SpringerLink; TOXNET (Toxicology Data Network): ANEUP, CCRIS, ChemIDplus, CIS, CRISP, DART, EMIC, EPIDEM, ETICBACK, FEDRIP, GENE-TOX, HAPAB, HEEP, HMTC, HSDB, IRIS, ITER, LactMed, Multi-Database Search, NIOSH, NTIS, PESTAB, PPBIB, RISKLINE, TRI; and TSCATS; Virtual Health Library; Web of Science (searches Current Content database among others); World Health Organization; and Worldwide Science. The following databases outside of HERO were searched for risk assessment values: ACGIH, ATSDR, CalEPA, EPA IRIS, EPA HEAST, EPA HEEP, EPA OW, EPA TSCATS/TSCATS2, NIOSH, NTP, OSHA, and RTECS.

### **REVIEW OF POTENTIALLY RELEVANT DATA (CANCER AND NONCANCER)**

The literature search revealed no human or animal studies (i.e., acute-, short-term-, or chronic-duration) for development of toxicity values for *n,n*-dimethylcyclohexylamine.

### **DERIVATION OF PROVISIONAL VALUES**

Limitations in the available data preclude development of either cancer and noncancer toxicity values for *n,n*-dimethylcyclohexylamine.

## CANCER WEIGHT-OF-EVIDENCE (WOE) DESCRIPTOR

Limitations in the available data preclude development of a WOE descriptor.

## MODE-OF-ACTION (MOA) DISCUSSION

Limitations in the available data preclude determination of a MOA discussion.

## REFERENCES

ACGIH (American Conference of Governmental Industrial Hygienists). (2010) Threshold limit values for chemical substances and physical agents and biological exposure indices. Cincinnati, OH:ACGIH. As cited in HSDB (Hazardous Substances Data Bank). Available online at <http://toxnet.nlm.nih.gov/cgi-bin/sis/htmlgen?HSDB>. Accessed on 05-03-11..

ATSDR (Agency for Toxic Substances and Disease Registry). (2010) Toxicological profile information sheet. U.S. Department of Health and Human Services, Public Health Service. Available online at <http://www.atsdr.cdc.gov/toxprofiles/index.asp>. Accessed on 05-03-11.

CalEPA (California Environmental Protection Agency). (2008) All OEHHA acute, 8-hour and chronic reference exposure levels (chRELs) as on December 18, 2008. Office of Environmental Health Hazard Assessment, Sacramento, CA. Available online at <http://www.oehha.ca.gov/air/allrels.html>. [595416](#). Accessed on 5/3/11.

CalEPA (California Environmental Protection Agency). (2009) OEHHA toxicity criteria database. Office of Environmental Health Hazard Assessment, Sacramento, CA. Available online at <http://www.oehha.ca.gov/risk/ChemicalDB/index.asp>. [595417](#). Accessed on 5/3/11.

IARC (International Agency for Research on Cancer). (2010) IARC Monographs on the evaluation of carcinogenic risks to humans. Available online at <http://monographs.iarc.fr/ENG/Monographs/PDFs/index.php>. Accessed on 11-01-10.

NIOSH (National Institute for Occupational Safety and Health). (2005) NIOSH pocket guide to chemical hazards. Index of chemical abstracts service registry numbers (CAS No.). Center for Disease Control and Prevention, U.S. Department of Health, Education and Welfare, Atlanta, GA. Available online at <http://www.cdc.gov/niosh/npg/npgdcas.html>. Accessed on 11-01-10.

NTP (National Toxicology Program). (2005) 11<sup>th</sup> Report on carcinogens. U.S. Department of Health and Human Services, Public Health Service, National Institutes of Health, Research Triangle Park, NC. Available online at <http://ntp-server.niehs.nih.gov/index.cfm?objectid=32BA9724-F1F6-975E-7FCE50709CB4C932>. Accessed on 11-01-10.



OSHA (Occupational Safety and Health Administration). (2010) Air contaminants: occupational safety and health standards for shipyard employment, subpart Z, toxic and hazardous substances. U.S. Department of Labor, Washington, DC. OSHA Standard 1915.1000. Available online at [http://www.osha.gov/pls/oshaweb/owadis.show\\_document?p\\_table=STANDARDS&p\\_id=10286](http://www.osha.gov/pls/oshaweb/owadis.show_document?p_table=STANDARDS&p_id=10286). Accessed on 11-01-10.

U.S. EPA (Environmental Protection Agency). (1994) Chemical assessments and related activities (CARA). Office of Health and Environmental Assessment, Washington, DC; EPA/600/R-94/904. Available online at [nepis.epa.gov/Exe/ZyPURL.cgi?Dockey=60001G8L.txt](http://nepis.epa.gov/Exe/ZyPURL.cgi?Dockey=60001G8L.txt)

U.S. EPA (Environmental Protection Agency). (2003) Health effects assessment summary tables (HEAST). Prepared by the Office of Research and Development, National Center for Environmental Assessment, Cincinnati OH for the Office of Emergency and Remedial Response, Washington, DC; EPA 540-R-97-036. Available online at <http://epa-heat.ornl.gov/>. Accessed 11-01-10.

U.S. EPA (Environmental Protection Agency). (2009) 2009 Edition of the drinking water standards and health advisories. Office of Water, Washington, DC; EPA/822/R-09/011. Available online at <http://www.epa.gov/waterscience/drinking/standards/dwstandards2009.pdf>. Accessed 11-01-10.

U.S. EPA (Environmental Protection Agency). (2010) Integrated risk information system (IRIS). Office of Research and Development, National Center for Environmental Assessment, Washington, DC. Available online at <http://www.epa.gov/iris/>. Accessed 11-01-10.

WHO (World Health Organization). (2010) Online catalogs for the Environmental Health Criteria Series. Available online at <http://www.who.int/ipcs/publications/ehc/en/>. Accessed 11-01-10.