



I-WASTE: EPA's Suite of Homeland Security Decision Support Tools for Waste and Disaster Debris Management and Disposal

P. Lemieux*, S. Thorneloe*, M. Rodgers**

*USEPA Office of Research and Development, Research Triangle Park, NC

**Eastern Research Group (ERG), Inc., Chantilly, VA

ORD Tools Café for Region 7
Lenexa, KS December 9, 2015

Background:

- I-WASTE is a location-specific decision support tool that can be used for a range of applications such as (1) carcass disposal, (2) waste and debris management from earthquakes, fires and floods, and (3) intentional disasters that can be localized or wide-spread.
- I-WASTE is also widely used in emergency preparedness training through the Department of Homeland Security.
- Updates have been made in response to user feedback and in support of National Homeland Security Planning Scenarios

Collaborators and Partners:

- ERG is Primary Contractor
- EPA
 - Multiple Program Offices, Regional Offices, Special Team
- Other Federal Agencies
 - Department of Homeland Security
 - U.S. Department of Agriculture
 - U.S. Army Corps of Engineers
 - U.S. Department of Energy
 - U.S. Department of Transportation
 - Federal Emergency Management Agency
 - National Institute of Standards and Technology
- State Agencies
- Waste and Water Industry Groups
- Professional Organizations

Target Audience:

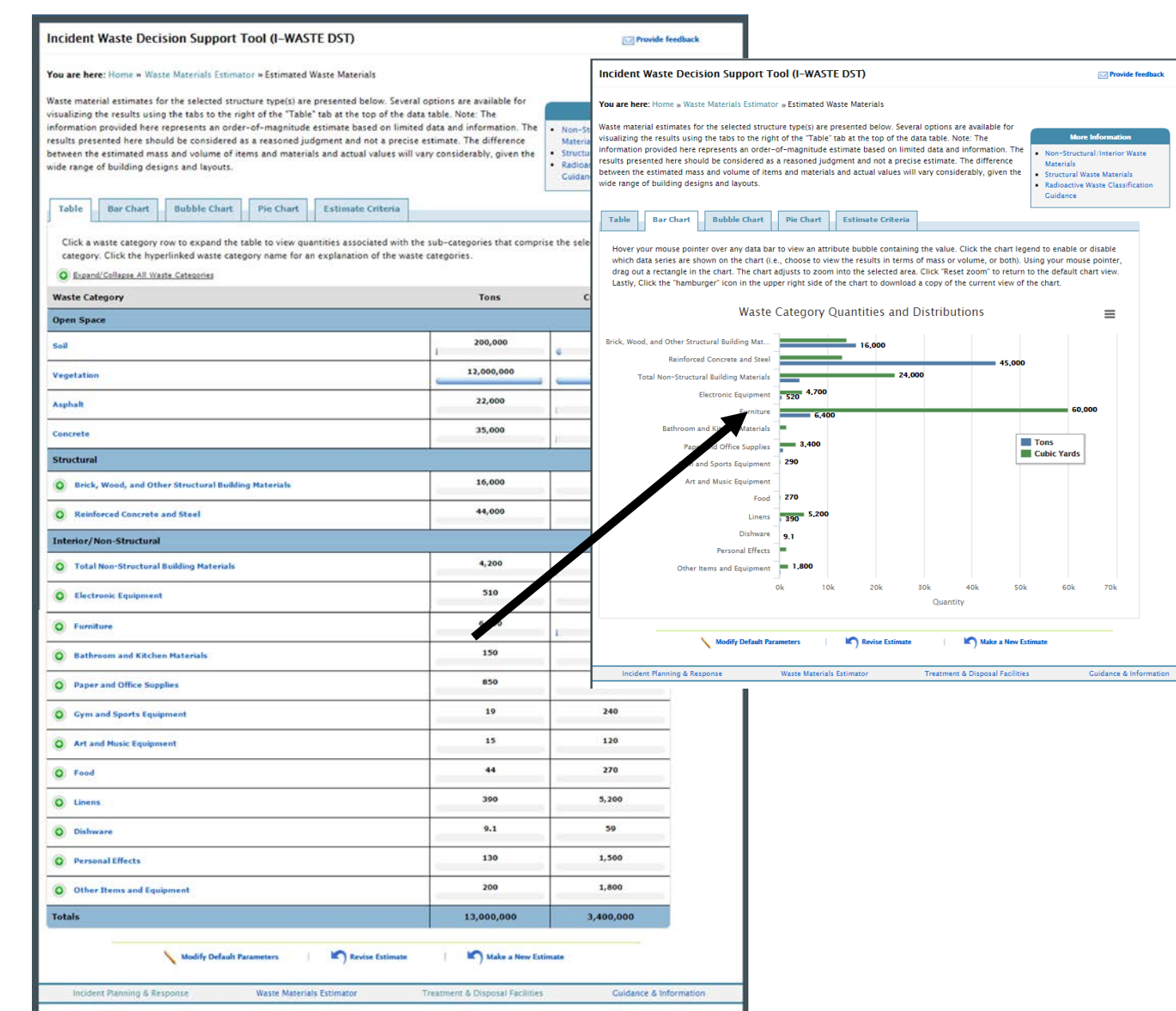
- EPA Response Community
 - On-scene Coordinators and Removal Managers
 - Environmental Response Team
 - Consequence Management Advisory Team
- State and Local Agencies
 - Emergency Planners
 - Public Health
 - Environmental Protection
 - Transportation
- Facilities
 - Combustors/incinerators
 - Landfills
 - Building owners/managers
 - Water infrastructure

Potential Applications:

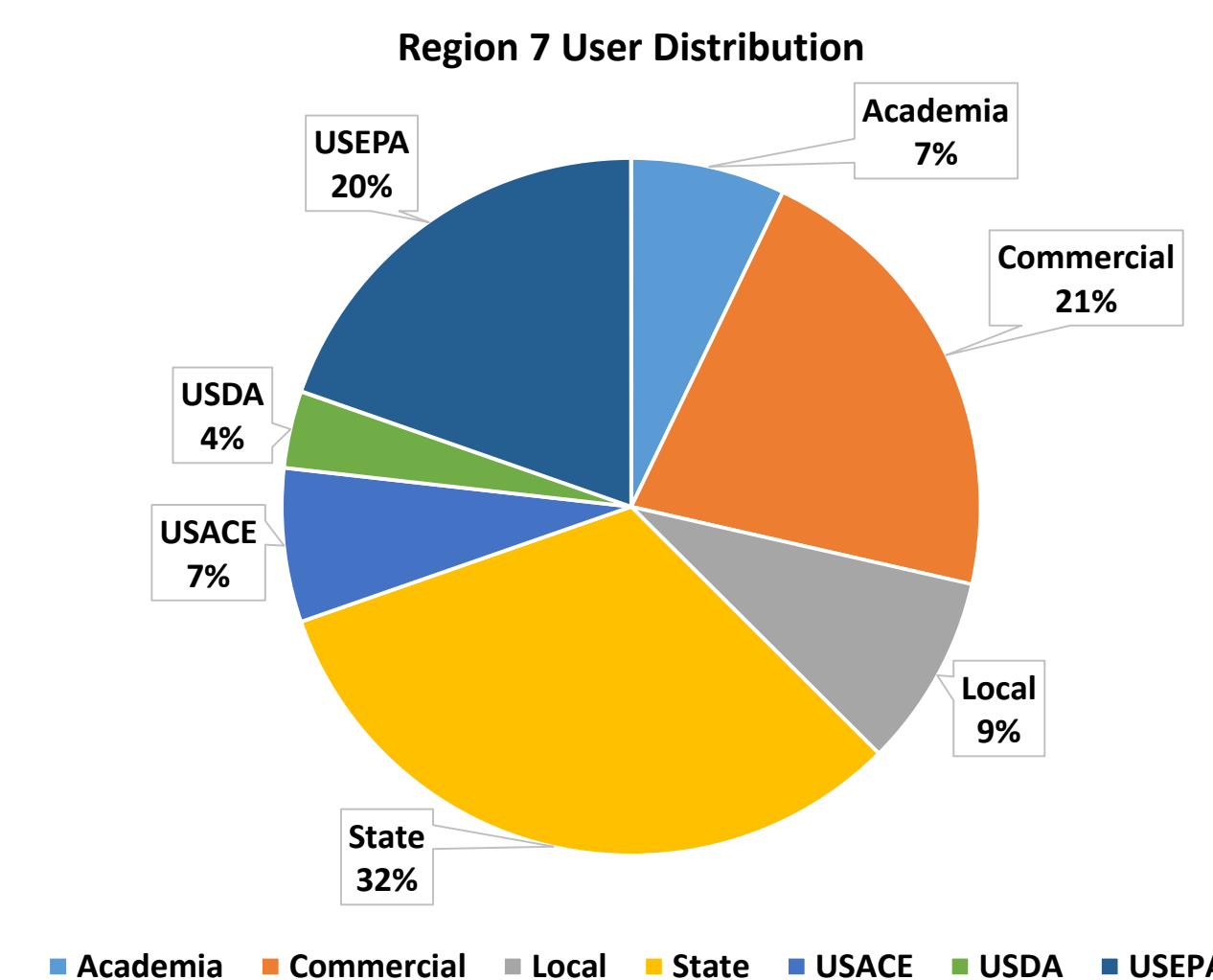
- Training, Planning & Exercise Tool
 - Supports State & Local Homeland Security (HS) Planning IAW National Planning Scenarios (NRF, 2008)
 - Allows multiple scenarios to be examined
 - Encourages discussions with facilities prior to event
 - For use in design or evaluation of HS Exercises involving disposal & recovery
- Starting point for clean-up
 - Quick reference
 - Reach back resource for planners & responders

Past Applications:

- HPAI Carcass Disposal
- ID Disposal Options for Floods and Fires
- Ebola Response
- National Level Exercises
- New York City Bioremediation Planning
- Incorporated into Other Tools



Example of Estimated Waste Materials



Specify Area and Structure:

Area: (Default: 10,000 sq. ft.)

Structure: (Default: Small Office)

Materials: (Default: Mixed)

Buttons:

Waste Materials Estimator Page

Selection of Disposal Facilities

Filter Criteria:

Facility Types: (Default: All)

Facility Name: (Default: All)

Facility Address: (Default: All)

Facility Phone: (Default: All)

Facility Email: (Default: All)

Facility Website: (Default: All)

Facility Status: (Default: All)

Facility Capacity: (Default: All)

Facility Hours: (Default: All)

Facility Notes: (Default: All)

Facility Details: (Default: All)

Facility Map: (Default: All)

Facility Data: (Default: All)

Facility Info: (Default: All)

Facility Search: (Default: All)

Facility Results: (Default: All)

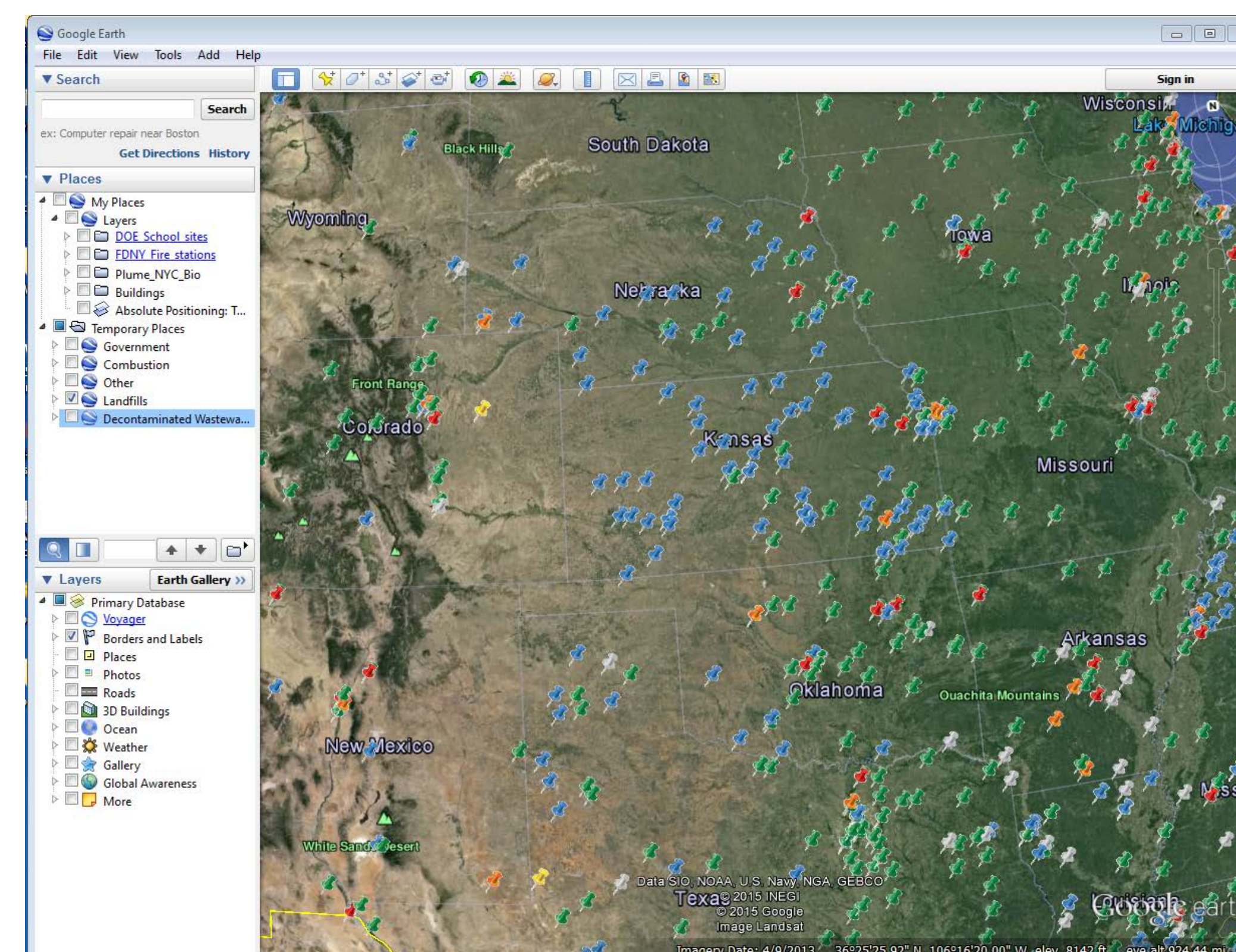
Facility List: (Default: All)

Facility Table: (Default: All)

Facility Footer: (Default: All)

Selection of Disposal Facilities

Name	Address	State	EPA Region	Contact Information
BILLINGS CITY LANDFILL	2242 JEFFERSON ROAD S. 102 W. S.	MT	8	Barbara Butler 406-247-0023
FLATHEAD COUNTY LANDFILL	4500 Hwy 93 North, Missoula	MT	8	Dan Phelan 406-718-0110
GALLATIN COUNTY LANDFILL	10200 Two Dog Road, SANDSPRING	MT	8	Mark Ray 406-562-2402
Leah & Clark County Landfill	4071 Dead Line, Helena	MT	8	Sharon Rhea 406-467-0023
Missoula Landfill	3737 Clark Ave Road, Missoula	MT	8	Nik Nussentberg 406-523-1143
MONTANA WASTE SYSTEMS - HIGHLANDS	142 POWELL ROAD, FLORENCE	MT	8	Doug Nussentberg 406-227-3000
Valley View Landfill	500 Highway 916, East Helena	MT	8	Dan Duffy 406-227-3000



Geocoded Waste Management Facility Databases

Important Reminders:

- I-WASTE is not an expert system (i.e., I-WASTE does not tell the user what to do), but rather presents information to consider during the decision-making or planning process
- I-WASTE assumes the decision to treat/dispose has been made
- I-WASTE does not present massive quantities of information to the user, but rather tries to distill information while maintaining links to more detailed information

Functionality:

- Navigate a framework for planning and response decision-making
- Estimate quantities and characteristics of waste
- Access waste management guidance for a variety of incident types
- Identify potential treatment/disposal facilities
- Access targeted guidance/fact sheets
- Access other planning and response tools

Facility Databases:

- Landfills
 - Municipal Solid Waste
 - Construction & Demolition Debris
 - Industrial Waste Landfills
 - Hazardous Waste
- Combustion Facilities
 - Municipal Waste Combustors (Waste-to-Energy)
 - Hazardous Waste
 - Medical/biohazardous Waste
 - Industrial combustion facilities (boilers, smelters, etc)
- Aqueous Waste Disposal Facilities
 - Publicly-Owned Treatment Works (POTWs)
 - Federally-Owned Treatment Works (FOTWs)
 - Centralized Waste Treatment (CWT) Facilities
- Other Facilities
 - Commercial Medical Waste Autoclaves
 - Federal Radioactive Waste Disposal Facilities
 - Commercial Radioactive Waste Disposal Facilities
 - Rendering Facilities

Future Enhancements:

- Incorporation of geospatial data and facility information into EPA GeoPlatform

Access:

<http://www2.ergweb.com/bdrtool/login.asp>

- First-time users will need to request a user ID and password – the link above has directions for making the on-line request
- If your request is approved, your login ID and initial password will be emailed to you.

Disclaimer: Reference herein to commercial products, processes, or services by trade name, trademark, manufacturer, or otherwise, does not imply its endorsement, recommendation, or favoring by the U.S. Government. Views and opinions of authors expressed herein do not necessarily state or reflect those of the U.S. Government, and shall not be used for advertising or product endorsement purposes.